

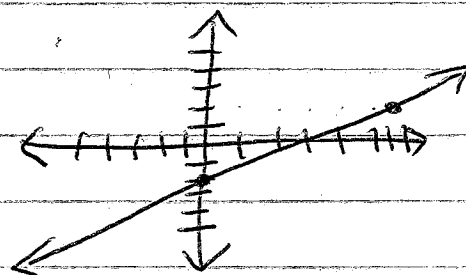
4.6 GRAPHING USING SLOPE INTERCEPT FORM

$$y = mx + b$$

Write in Slope-intercept form. Then graph the equation

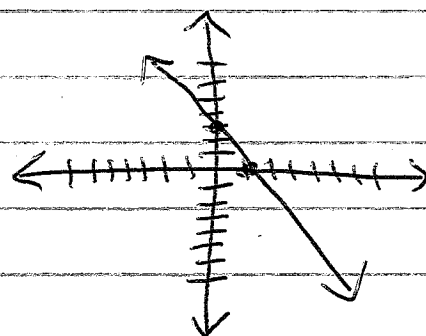
Ex 1 $4x - 7y = 14$

$$\frac{-7y}{-7} = \frac{-4x + 14}{-7}$$
$$y = \frac{4}{7}x - 2$$



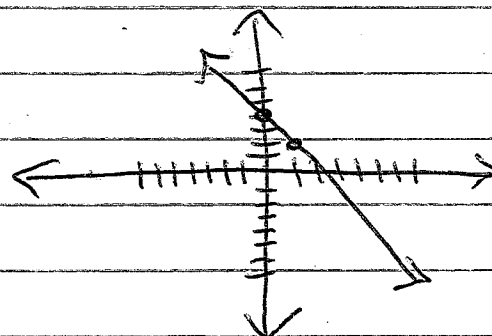
Ex 2 $6x + 2y - 6 = 0$

$$6x + 2y = 6$$
$$\frac{2y}{2} = \frac{-6x + 6}{2}$$
$$y = -3x + 3$$



Ex 3 $7(2x + y) = 28$

$$14x + 7y = 28$$
$$\frac{7y}{7} = \frac{-14x + 28}{7}$$
$$y = -2x + 4$$



Homework: p. 244 #34-45